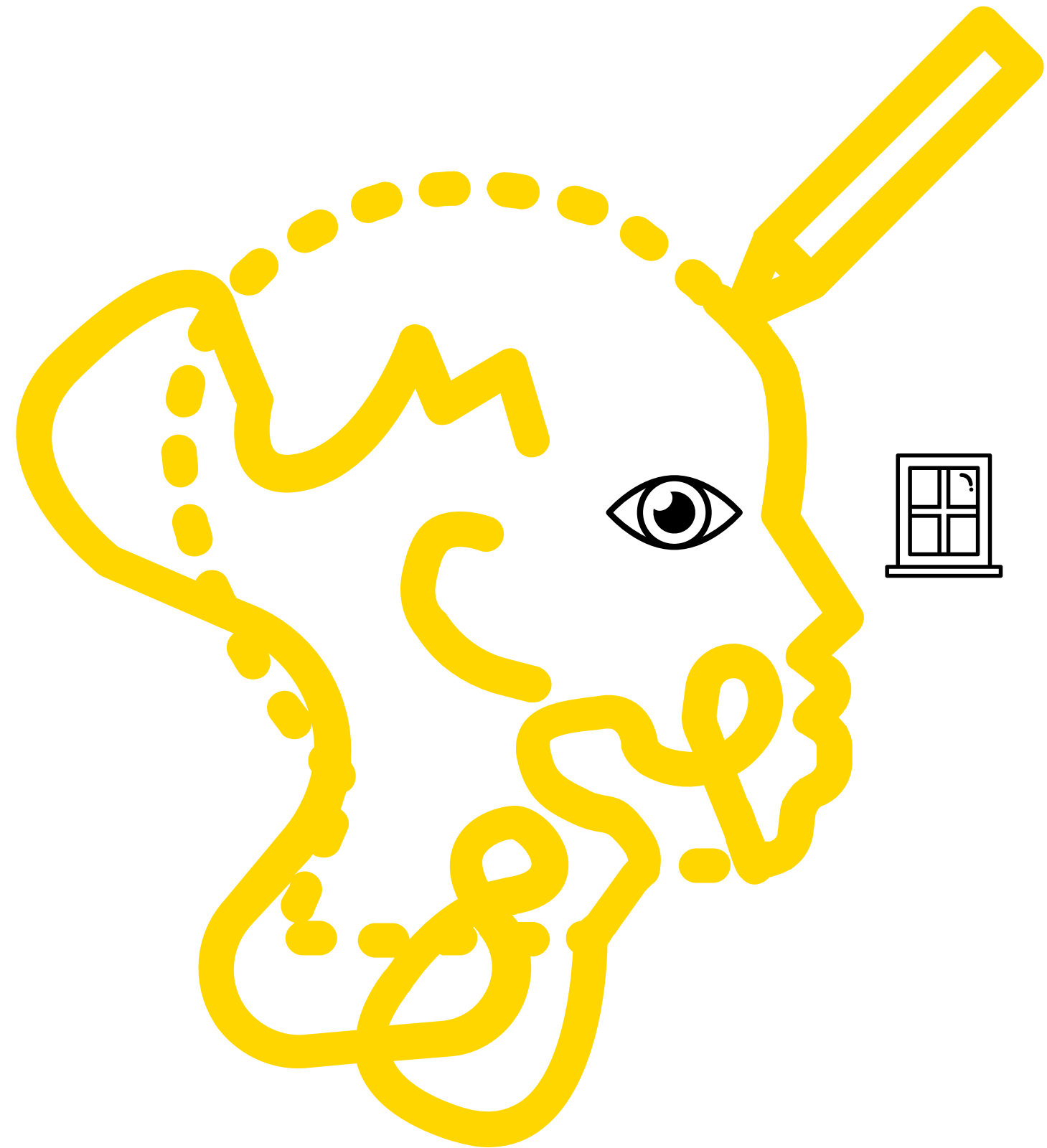


# MYSELF IN THE WORLD

**PART A: WHAT DO YOU SEE?**

**PART B: JOHARI WINDOW**



**PART A**

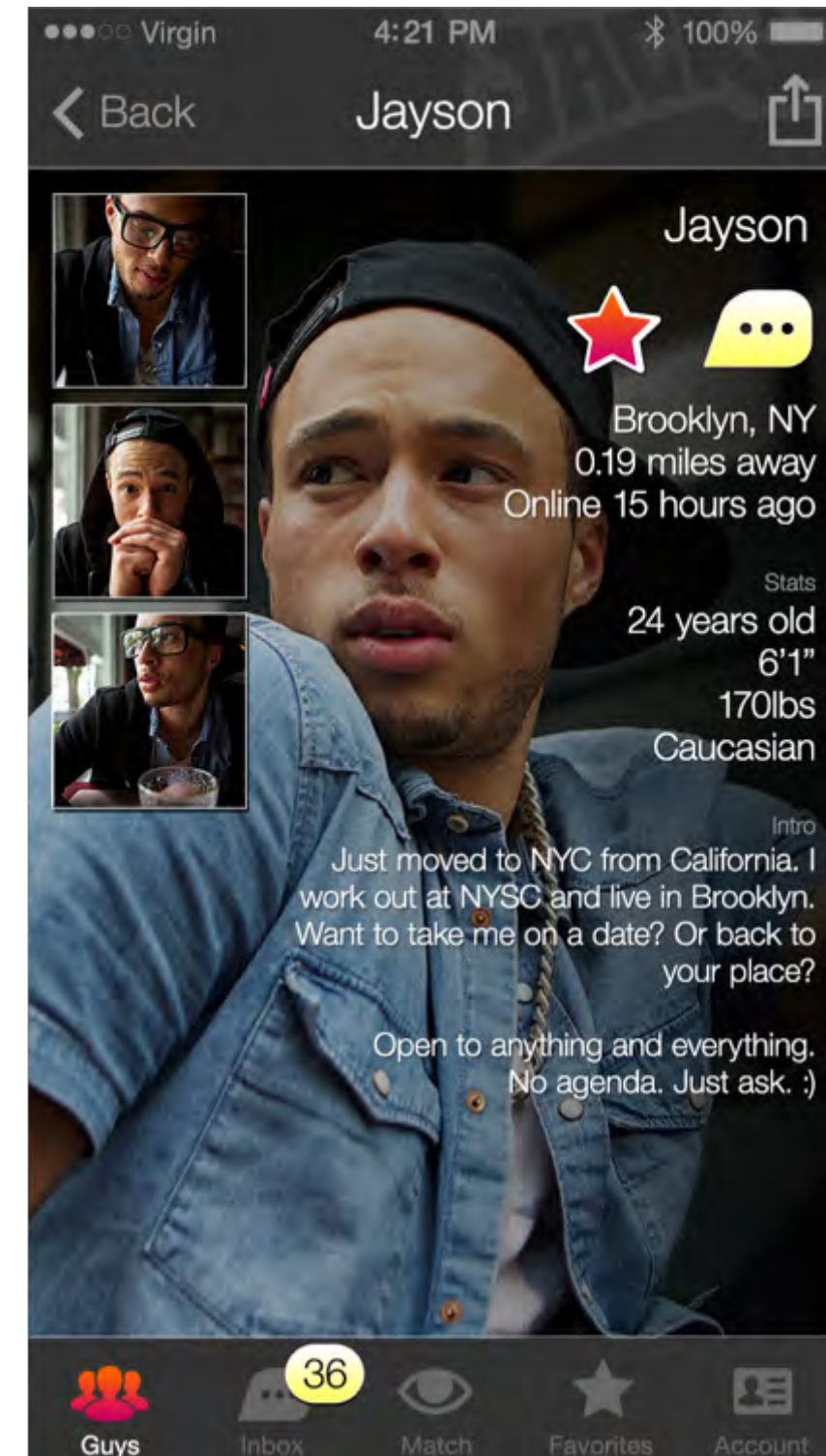
**WHAT DO YOU SEE?**



---

# What do you see?

- Talk with one another about the person in the picture. What can you tell about this person by looking at them?
- Are they open to hooking up? Dating?
- What kinds of people do they like to date? To have sex with?
- What sexual role(s) do they take? What kinds of sex do they like to have?
- What makes you think that?



---

# What do you see?

- Talk with one another about the person in the picture. What can you tell about this person by looking at them?
- Are they open to hooking up? Dating?
- What kinds of people do they like to date? To have sex with?
- What sexual role(s) do they take? What kinds of sex do they like to have?
- What makes you think that?



---

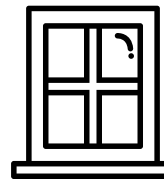
# What do you see?

- Talk with one another about the person in the picture. What can you tell about this person by looking at them?
- Are they open to hooking up? Dating?
- What kinds of people do they like to date? To have sex with?
- What sexual role(s) do they take? What kinds of sex do they like to have?
- What makes you think that?



## PART B

# JOHARI WINDOW



---

# How Do I Identify?

- **Intersectionality:** A term coined by Black legal scholar, Kimberle Crenshaw, in her 1989 essay, “Mapping the Margins: Intersectionality, Identity Politics, and Violence Against Women of Color”
- **Intersectionality** recognizes the multiple, overlapping and intersecting identities (i.e. race, class, gender, ability, age etc.) and related systems of oppression (i.e. racism, classism, sexism, ableism, ageism).

---

# Aspects of Our Identity

## SEXUAL ORIENTATION

---

### *Who I am attracted to*

Who you are attracted to or have sex/relationships with—it's mostly about who they are and not who you are. Sexual orientations include gay, lesbian, straight, bisexual, and asexual.

## RACE

---

### *What racial group I'm assigned to*

A social construct that artificially divides people into distinct groups based on characteristics such as physical appearance (particularly skin color), ancestral heritage, cultural affiliation, cultural history, ethnic classification, and the social economic and political needs of a society at a given period in time.

Adams, M., Bell, L. A., Goodman, D. J., & Joshi, K. Y. (2016). *Teaching for diversity and social justice*. New York: Routledge.

## GENDER IDENTITY

---

### *Who you think you are*

The internal perception of your gender, and how you label yourself, based on how much you align or don't align with the gender options you know of. Gender is on a continuum. Common identity labels include man, woman, genderqueer, trans, and more.

## GENDER EXPRESSION

---

### *How I show up in the world*

The external display of gender, shown through a combination of dress, demeanor, social behavior, and other factors, generally measured on scales of masculinity and femininity. Also referred to as “gender presentation.”



---

# What Is the Johari Window?

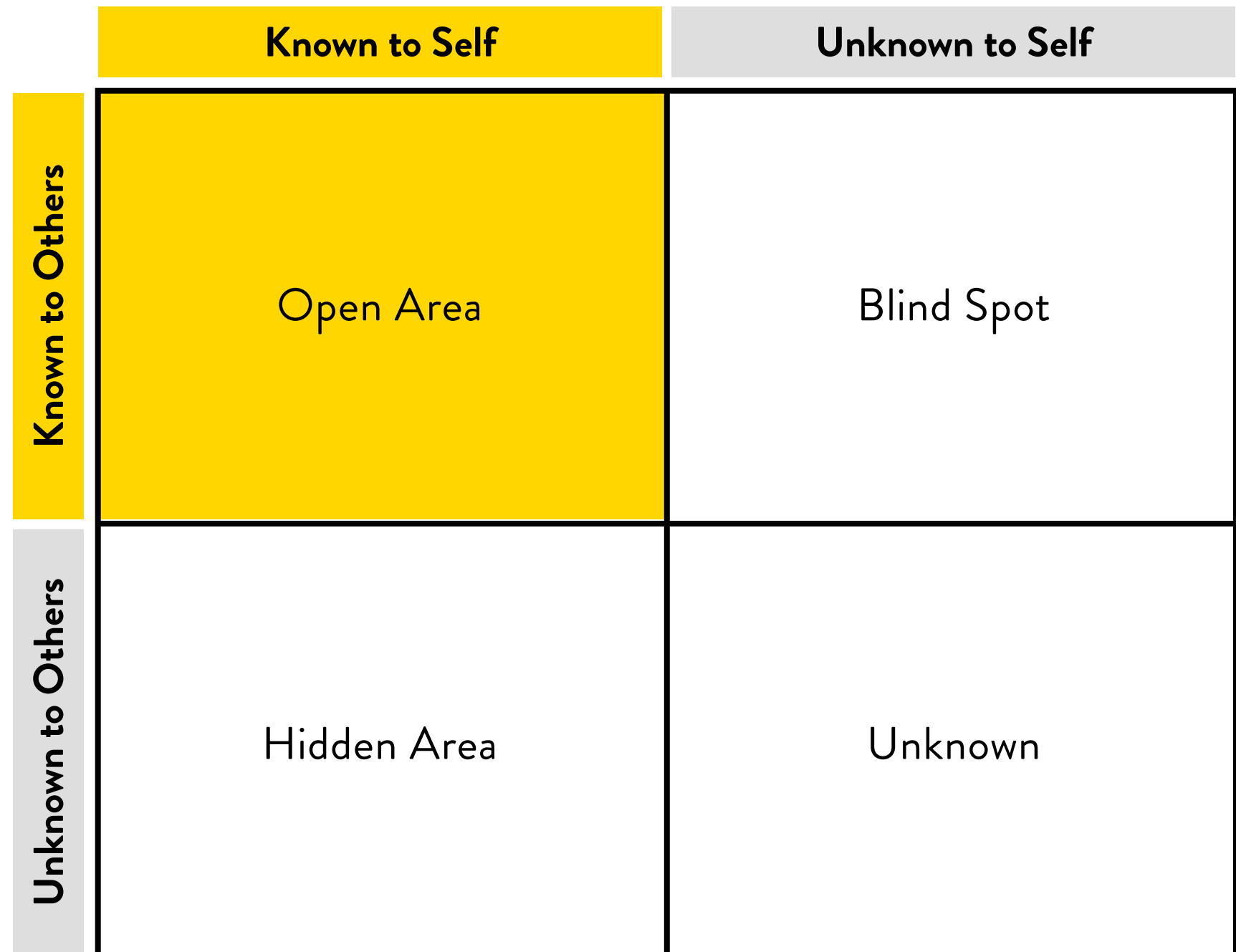
- The Johari Window is a tool to help people better understand their relationship and perceptions of themselves and others.
- It was developed in 1955 by American psychologists Joseph Luft and Harrington Ingham to improve self-awareness and mutual understanding between individuals within a group.

	Known to Self	Unknown to Self
Known to Others	Open Area	Blind Spot
Unknown to Others	Hidden Area	Unknown

---

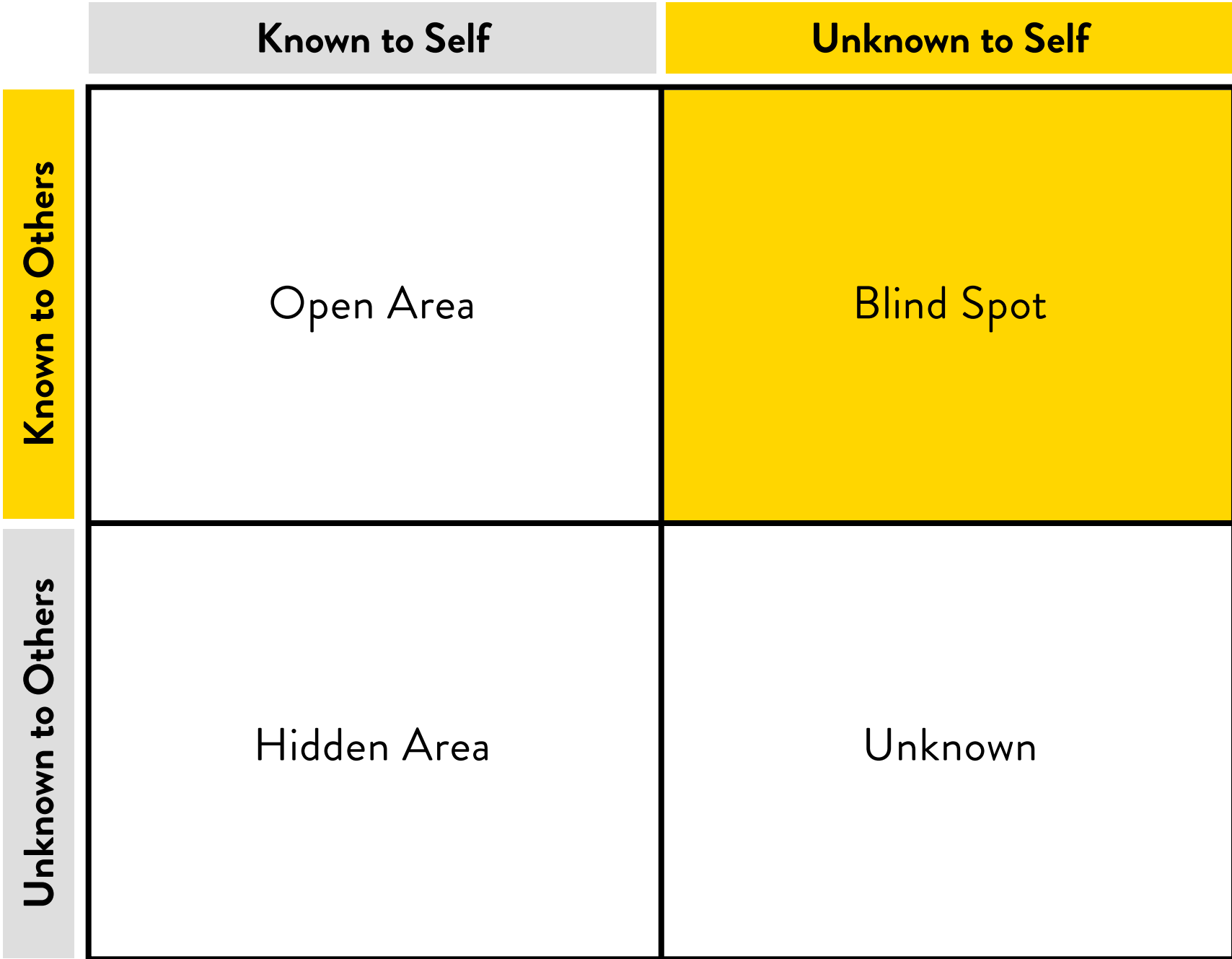
# Johari Window: Open Area

- Information about you that both you and others know.
- This could be my:
  - » Race
  - » Sexual Orientation
  - » Gender expression
  - » Gender identity
  - » Political Views
  - » Skills



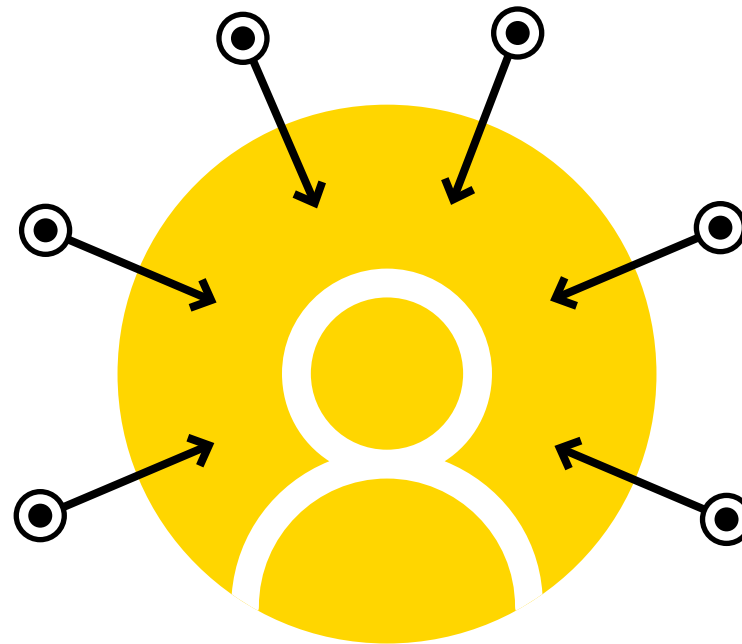
# Johari Window: Blind Spot

- Information about you that you don't know but others do know.
- This could be the way others perceive your:
  - » Gender identity
  - » Sexual orientation
  - » Race
  - » Class
  - » HIV status
  - » Health



---

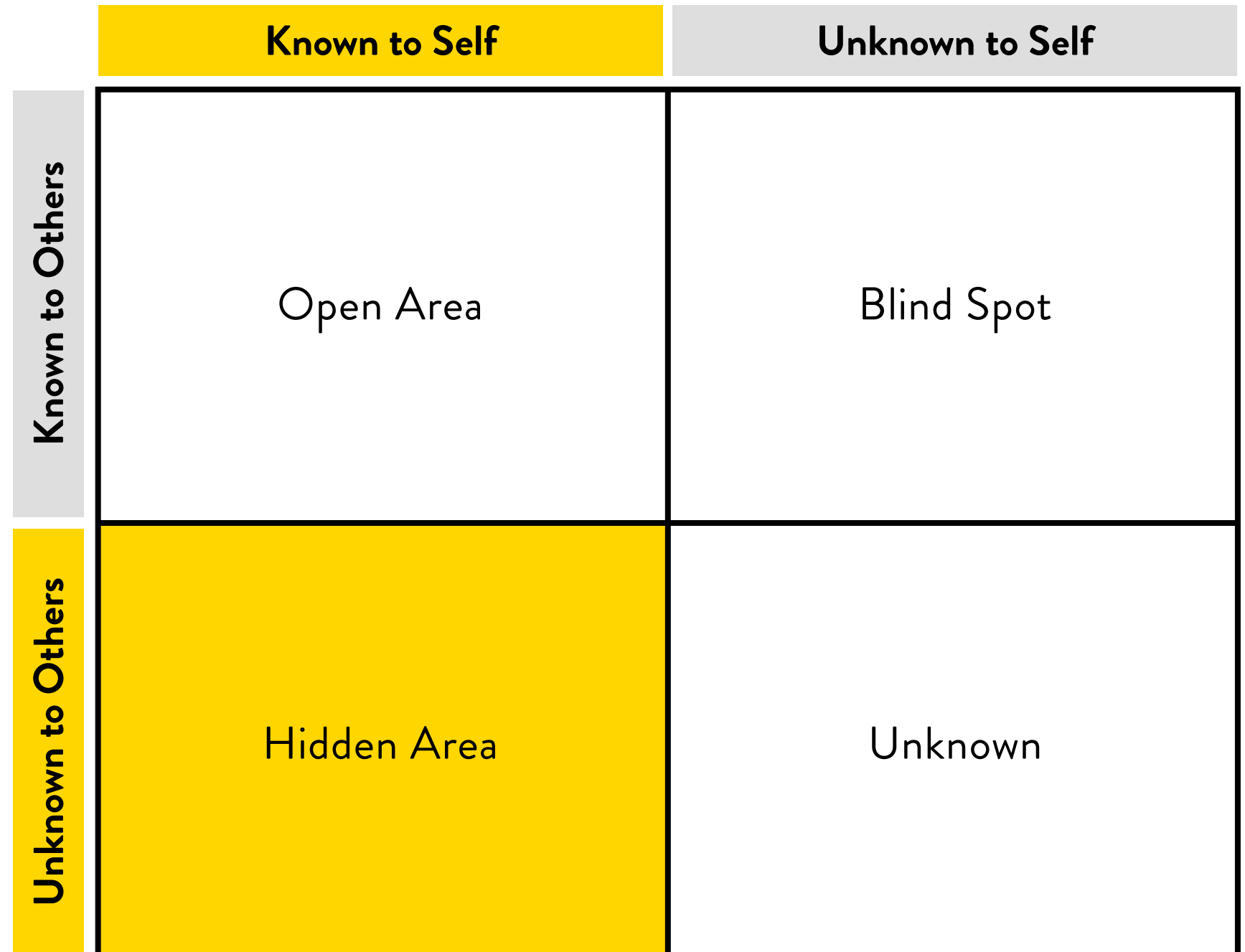
# How Do Others See Me?



---

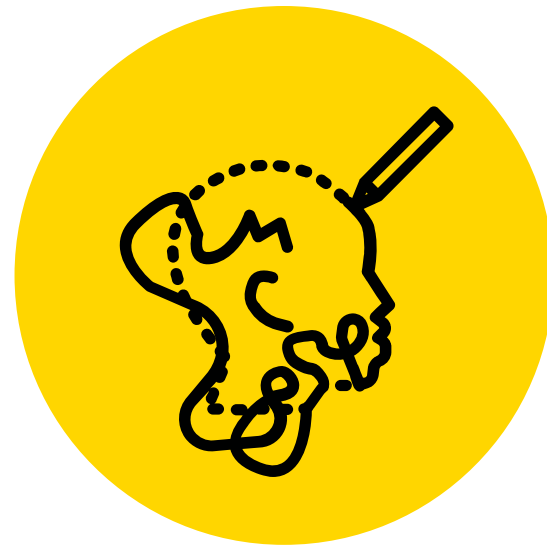
# Johari Window: Hidden Area

- Information about you that you know but others don't know.
- This could be your:
  - » Gender identity
  - » Sexual orientation
  - » Race
  - » Class
  - » HIV status
  - » Health



---

# How Does *My* Perception of My Identity Compare to How Society Views Me?



---

# Johari Window: Unknown

- Information about you that neither you nor others know.
- This could be your:
  - » HIV status
  - » Sexual and relational desires
  - » Sexual and relational boundaries

